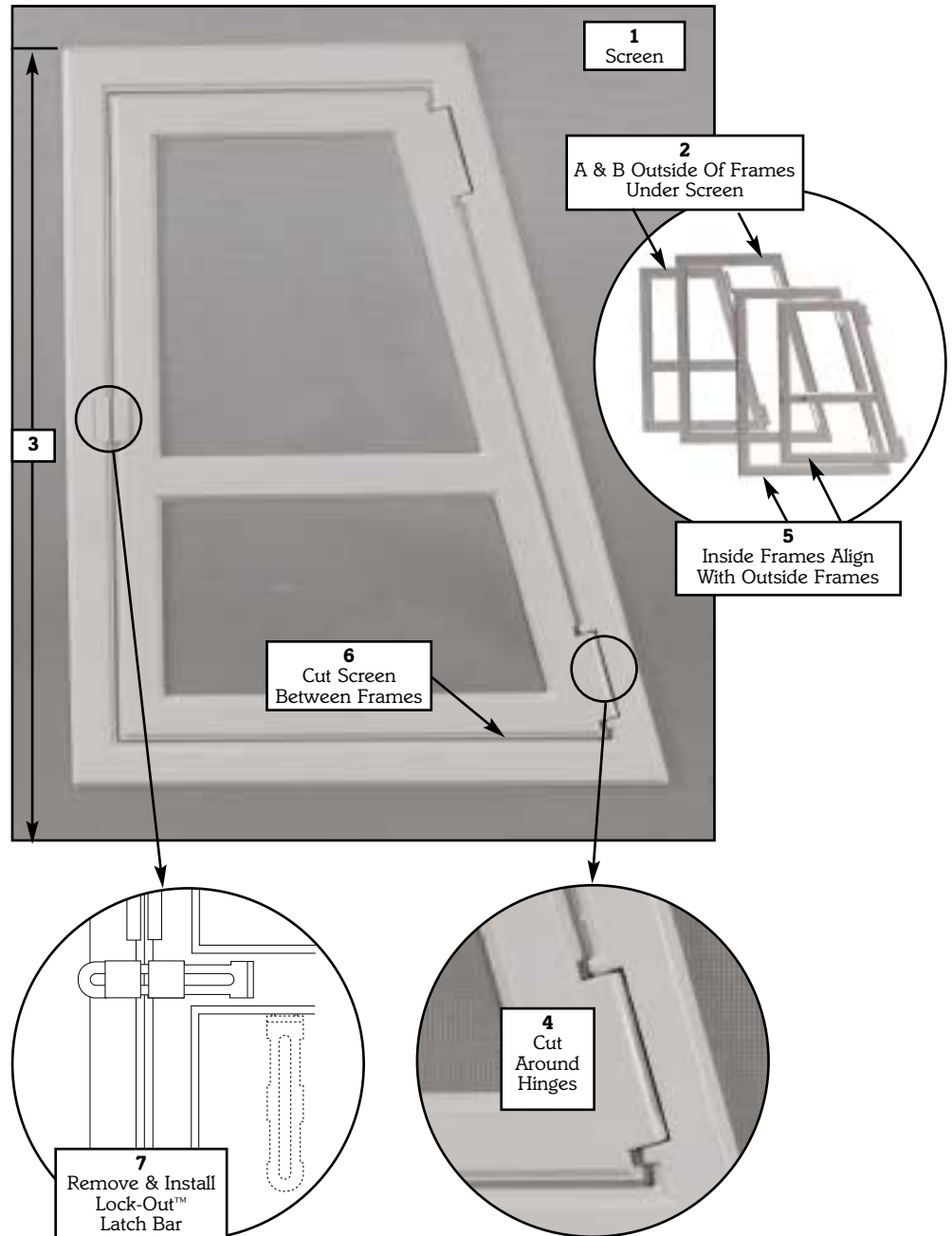


The Pet Passage™ Assembly Instructions

Please read instructions thoroughly before assembling.

1. Remove screen from window or door selected to install your Pet Passage™. Lay it on a hard, flat surface.
2. Place sections A & B of the Pet Passage™ under screen. These are the outside of frames.
3. Using your pet's measurements from floor to top of shoulders, locate and position the frame on the screen accordingly. To assure smooth closure, make certain that the bottom of the Pet Passage™ frame is parallel to the bottom of the screen.
4. Cut out screen 2½" x 7/8" around hinged areas only.
5. Place inside frames on top of screen, properly aligning them with outside frames. Using a hammer or mallet, tap frame around until snap locks are firmly jointed.
6. With a sharp knife, cut the screen between the inner and outer frames.
7. Remove the Lock-Out™ latch bar off frame and insert into latch channel.

You are now ready to replace your screen and enjoy a very happy pet!



Limited Lifetime Warranty

All parts are guaranteed to be free of manufacturing defects. Defective parts will be replaced free of charge.

Manufactures' Note:

It is necessary to be certain that frames are pressed together securely to screen. Be certain there is no gap between frame and screen. Due to different gauge of screening, you may not close frames securely by assembling with a mallet. If this condition arises, press firmly with toe of foot while screen is on floor. You should hear a snap as buttons in frame close securely.